

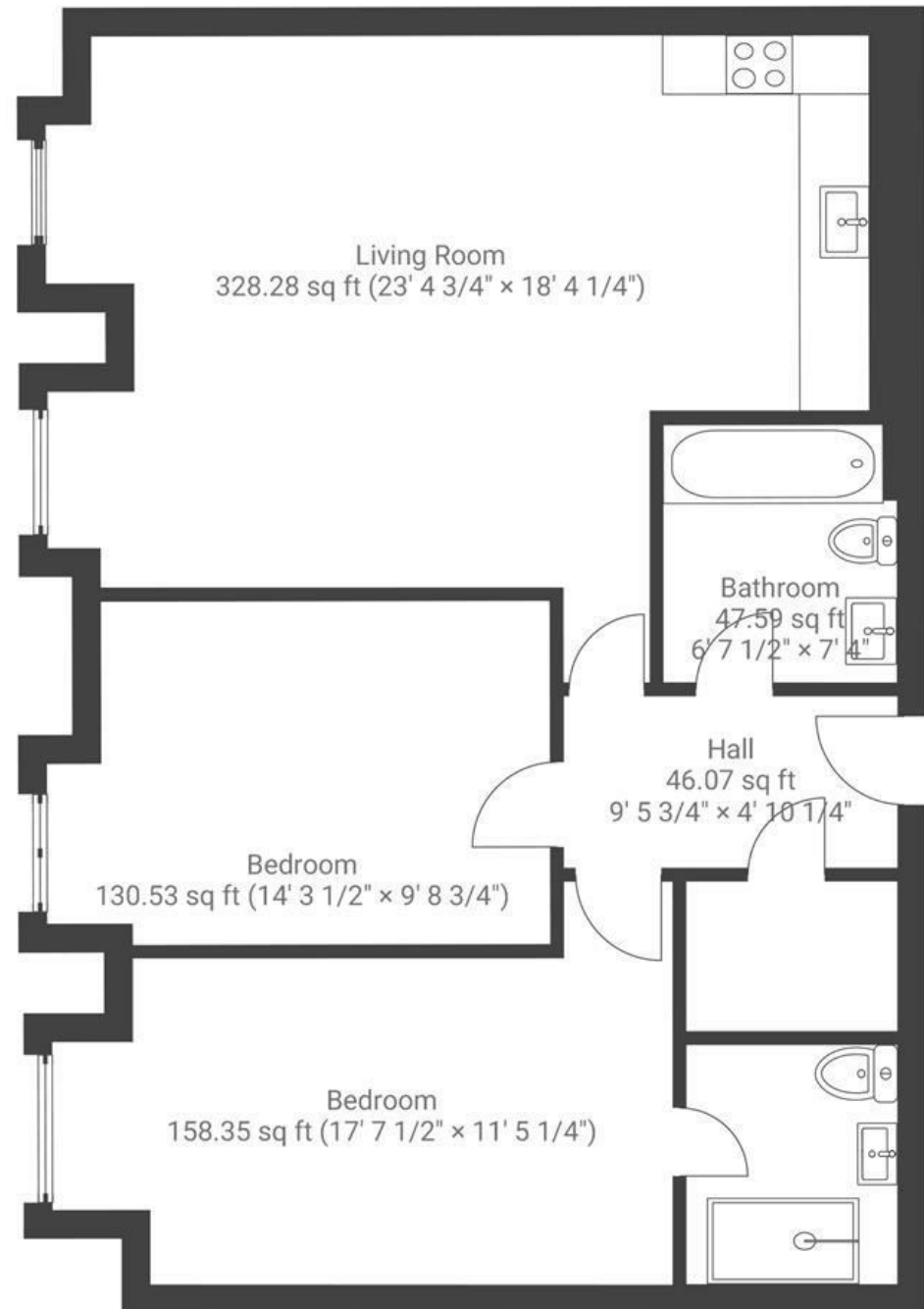
# The Old Shoe Factory

ST PAULS

APPROXIMATE FLOOR AREA  
73.7 SQM / 793 SQFT



FIRST FLOOR



Boardwalk

# The Old Shoe

PORTLAND SQUARE, BRISTOL



£385,000



2 Bedrooms



BS2 8RR



2 Bathrooms

*"We love our home, it has been a passion project and we are so proud of what we have achieved. The views out of the windows are what we fell in love with when we first viewed it and still every morning having our cup of coffee nothing beats it. It feels like you are amongst the trees and watching the changing seasons from the sofa is a luxury. The area itself has been unmatched, with St Werburghs in one direction and every high street retailer the other you literally want for nothing!"*

